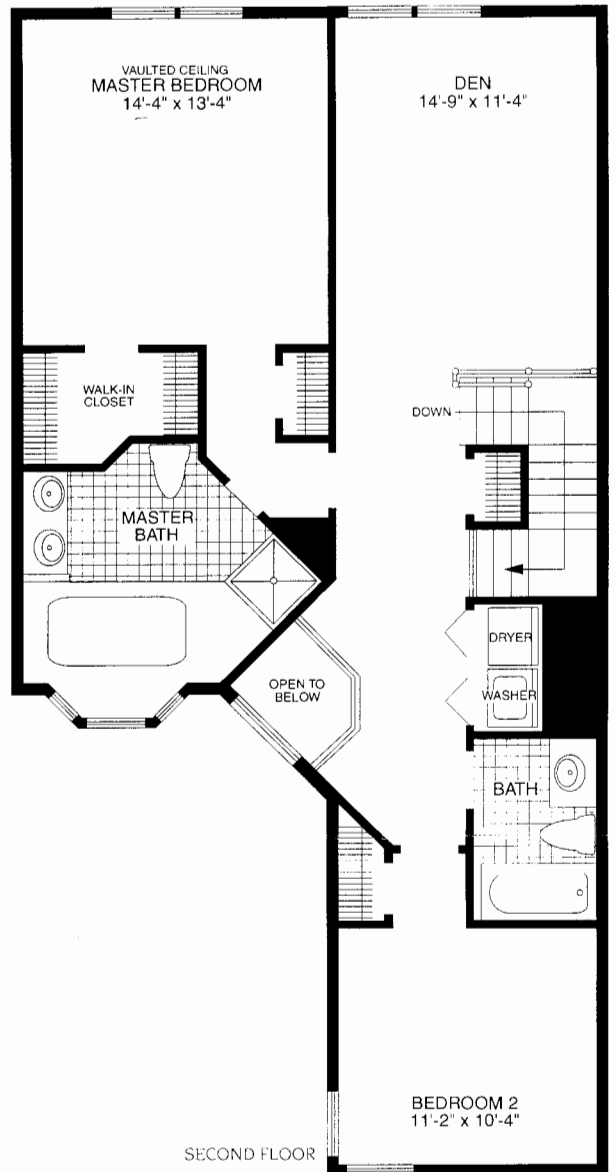
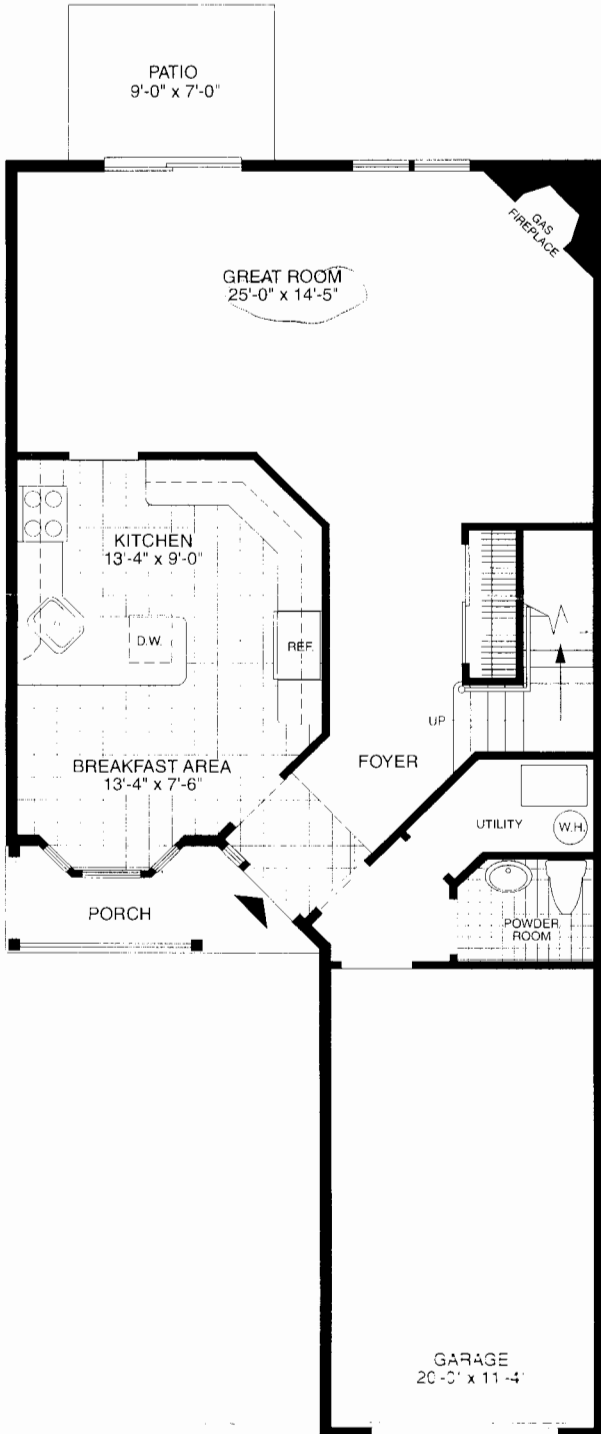


**WILLOW  
WOOD**  
AT EAST SETAUKET

**THE BIRCH**  
*(Interior Townhome)*  
**2 Bedrooms,**  
**2½ Baths,**  
**Den & Garage**



# Your home at Willow Wood features...

## A deluxe, ultra-modern kitchen with:

- Energy-efficient GE gas range
- Deluxe range hood
- Deluxe, energy-efficient GE dishwasher
- Deluxe, energy-efficient 18-cubic-foot GE refrigerator
- Decorator-selected maple, oak or laminate cabinets in a variety of finishes with crown mouldings
- Stainless steel sink with sprayer
- Choice of decorator-selected mica countertops
- Ceramic tile floor

## Spacious bathrooms with:

- Decorator-selected Kohler plumbing fixtures
- Bathtubs and showers with ceramic-tile surrounds
- Glass shower doors in master bath
- Maple, oak or laminate vanities in a variety of finishes

- Customized mica countertops with drop-in sinks

- Pedestal sink in half bath

- Decorator-selected lights over vanities
- Mirrored swing-door medicine cabinets in full baths
- Ceramic tile floors

## A conservation/comfort package with:

- Covered front entry
- Insulation: R-13 in exterior walls, R-30 in ceilings, except cathedral

- Insulated thermal-break windows and doors
- Custom thermal-insulated entry door
- Weather stripping seals on all windows and exterior doors
- Economical, energy-efficient, gas-fired forced-air heating
- Quick-recovery gas water heater
- Central air conditioning

## Also included:

- 9-foot ceilings on first floor
- Gas fireplace
- Ceramic tile entry foyer as shown
- Wall-to-wall carpeting in all living areas and bedrooms
- Attached garage with convenient interior entry



# WILLOW WOOD

AT EAST SETAUKET

- Dramatic vaulted ceilings
  - Decorator-selected lighting fixtures
  - Sliding glass doors opening to private concrete patio
  - Raised-panel embossed interior doors
  - Two coats of interior paint
  - Pre-wired connections for telephone and cable TV
  - Smoke detectors
  - 150-amp electrical service
  - Energy-efficient GE washer and dryer
  - Maintenance-free vinyl siding & stone exterior
  - Brass kickplate and designer hardware on entry door
  - Professionally landscaped, sodded and sprinklered grounds
- Private community features:
- Gatehouse entry
  - Waterscaped pond
  - Highly acclaimed Three Village School District
  - Underground utilities
  - Asphalt driveway
  - Concrete walkways



(631) 928-0400

The complete offering terms are in an offering plan available from the Sponsor.

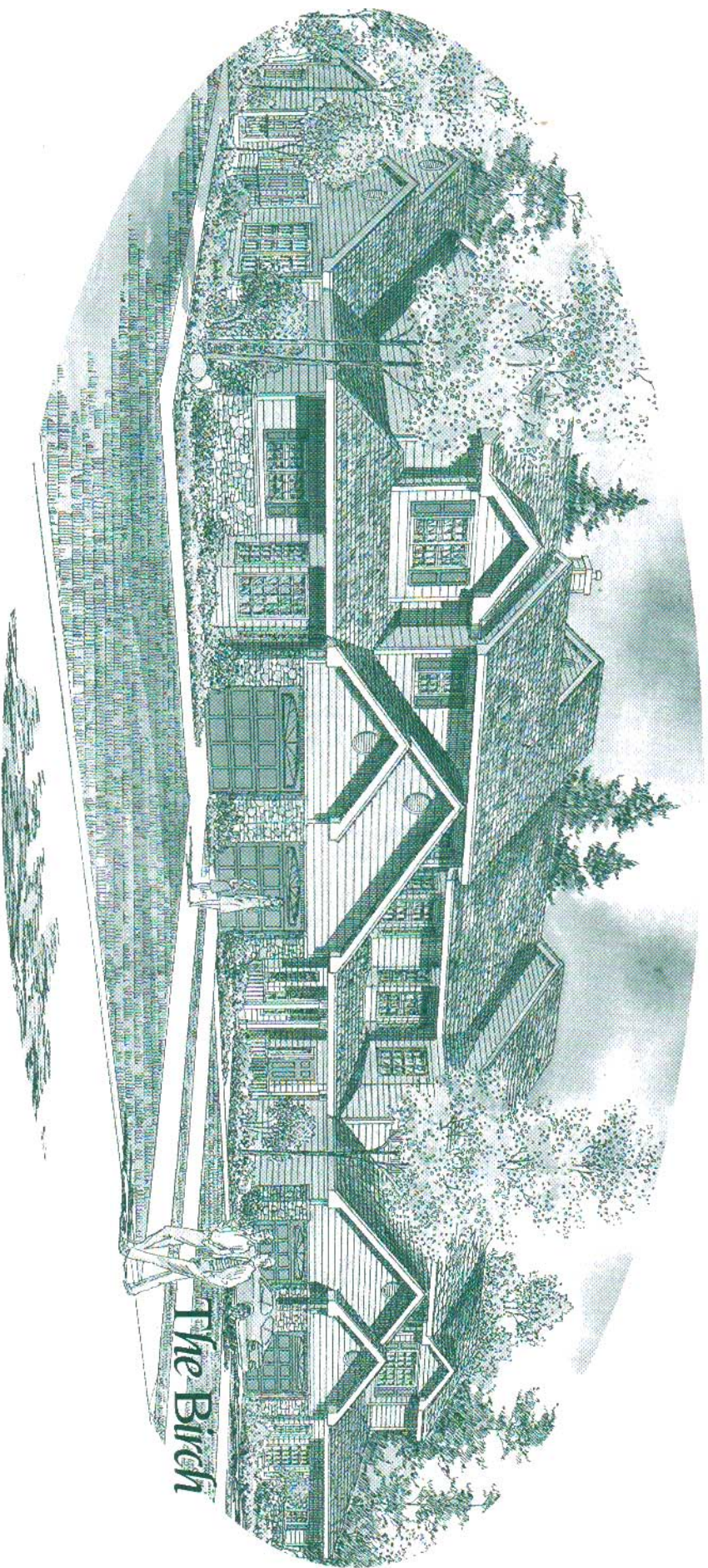




# THE BIRCH

(INTERIOR TOWNHOME)

2 Bedrooms, 2½ Baths, Den & Garage



The Birch